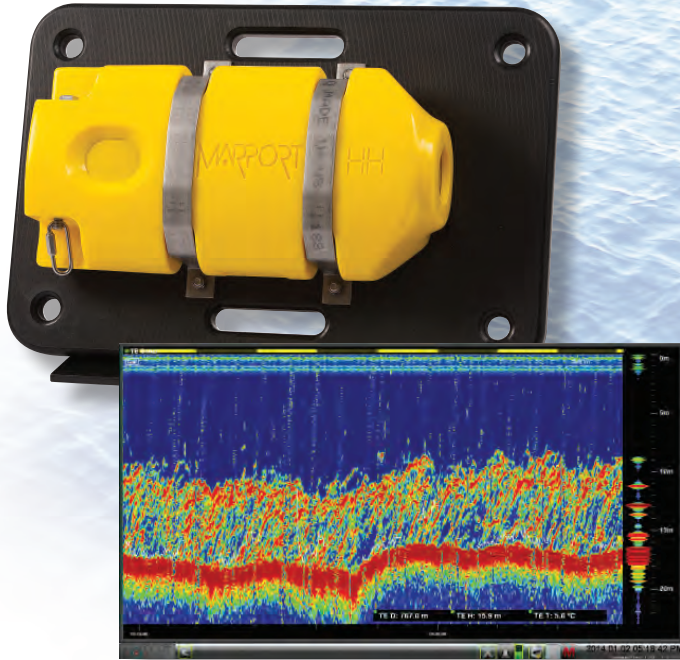


## Trawl Explorer



**Marport's Trawl Explorer model TE-504-W net sounder is flexible, accurate and advanced digital wireless trawl sounder available in the industry.**

State-of-the-art, advanced wireless design provides accurate, real-time presentation of fish targets relative to the net and headline as well as clearance between footrope and seabed. This unit provides a digital representation of Trawl Depth, Temperature, Height, and optional Pitch & Roll angle for an accurate target resolution and indication of the trawl behavior.

Trawl Explorer TE-504-W has dual frequencies (selectable between 86 kHz to 210 kHz) with narrow and wide beam width to adapt to fishing conditions and best possible target detection. Programmable operational modes including Up/Down, Down/Down or Up/Up with several selectable presentation modes including True Motion.

TE-504-W is compatible, fully programmable and interchangeable with CN series display and is a direct replacement for the CN-24 net sounder.

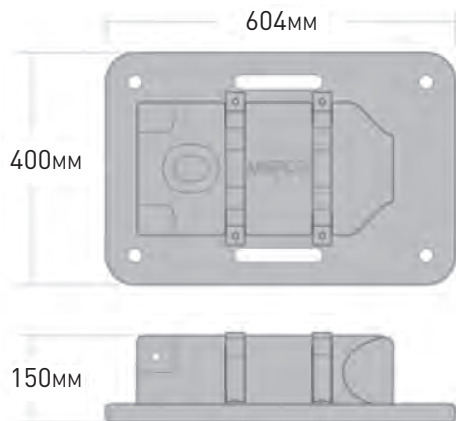
This unit offers a highly advanced resolution providing superb fish target presentation in real time, including the use of advanced Lithium-Ion battery technology provides unmatched extended operational life and updates of up to every 0.9 seconds.

### Features

- Selectable DUAL sounding High and Low frequencies
- 3 operational modes for Up/Down, Down/Down and Up/Up operation
- Fast charge configuration for 3.5 hours to full charge
- Heavy-duty proven design for best performance
- Lithium-Ion battery provides unmatched battery life
- Interchangeable and compatible with other industry manufacturers



## Technical Specifications



Uplink Frequency	Broadband programmable 33 to 60 kHz
Uplink Beam width	70° (-3dB)
Range to Vessel	2500 m
Working Depth	Up to 1800 m
Sounder Frequencies	Broadband programmable 86 to 216 kHz
Ops Modes	Up/Down, Down/Down
Sounder Beam width	40° or 16°
Temp Measurement Range	-5° C to +40° C
Vertical Resolution	0.20 m
Update Rate	0.9 sec. or 1.15 sec.
Pitch & Roll (Angle)	±90°
Optional Pitch & Roll Resolution	±0.1°
Battery Type	Lithium-Ion 7.4 V 14A
Typical Battery Life Range	Up to 60 hours*
Charging Time	Standard: 10 – 14 hours** Fast Charge: 70% full = 1 hour, full charge = 3.5 hours**
Weight in Air	15.9 kg
Weight In Water	1.6 kg

\* Reference Only. Depends on sensor functions enabled. Battery life may be extended using low power settings.

\*\* Based on average charging time. Refer to the Battery Chargers Quick Reference Guide for further information.



### PRODUCT NUMBER

### DESCRIPTION

<b>TE-504-W</b>	<b>HEADROPE NET SOUNDER SENSORS –Dual Frequency</b>
DTO-0-00	TEMP & DEPTH (Standard Feature, Included)
RPO-0-00	PITCH & ROLL (Angle) OPTION

Performance specifications are estimates only. Actual results will vary depending on sea state and external factors outside Marport's control. Products may appear differently than shown.

©2014 Marport. All rights reserved. No part of this document may be reproduced, stored in a retrieval system or transmitted in any form by any means; electronic, mechanical, photocopying or otherwise, without the express written permission from Marport. "Marport", the Marport logo and Software Defined Sonar are registered trademarks of Marport. All other brands, products and company names mentioned are the trademark and property of its respective owners only. Marport is a division of Airmar Technology Corporation.

**For more information,  
please contact Marport**  
E-mail: [sales@marport.com](mailto:sales@marport.com)  
[www.marport.com](http://www.marport.com)

**Americas /Asia Pacific**  
Patrick Belen  
T: +206.953.9111  
E: [pbelen@marport.com](mailto:pbelen@marport.com)

**Spain / Latin America**  
Gildo Perez  
T: +00 34 986 117 310  
E: [gperez@marport.com](mailto:gperez@marport.com)

**Southern Europe / Africa**  
Loic Ollivier  
T: +33(0) 671.643.549  
E: [lollivier@marport.com](mailto:lollivier@marport.com)

**Europe / Scandinavia / Russia**  
Oskar Axelsson  
T: +354.533.3838  
E: [oskar@marport.com](mailto:oskar@marport.com)